



Sri Lanka

Group Tour for 9 Nights and 10 Days

Sri Lanka, often referred to as the paradise island, boasts enchanting beaches, verdant forests, and majestic mountains, all set against the backdrop of a rich and vibrant culture that spans millennia. Recognized by 'Lonely Planet' as the top travel destination in 2013, Sri Lanka is truly a unique paradise. The country is adorned with some of the world's most exquisite beaches, diverse rainforests, and dry zone forests, accompanied by awe-inspiring mountain ranges. Additionally, its historical world heritage sites add to the allure of this captivating destination.



Detailed Itinerary





Airport to Kitulgala

Airport to Kithulgala

- Arrival at the Airport:: Our team will greet you and assist with luggage, then guide you to your vehicle for the journey to Kithulgala.
- Drive to Kithulgala
- Check-in and relaxation: arrive at your hotel in Kithulgala and prepare for the adventures ahead.

Day 01

Kitulgala

Kitulgala, Sri Lanka, is a nature lover's heaven for water sports and an adventure seeker's spot. As well as being the best place for human training programs which nestled in the Sabaragamuwa Province, it boasts lush landscapes with the Kelani River providing a stunning backdrop. Enjoy thrilling white-water rafting, explore canyon water sports at Kitulgala, Take scenic treks through dense jungles and visit the ancient Belilena Cave. Whether seeking tranquillity or excitement, Kitulgala invites you to discover the best of Sri Lanka's natural wonders.





Kithulgala Highlights



Kitulgala white-water rafting

White-water rafting in Kitulgala, Sri Lanka immerses adventurers in the heart of thrilling rapids and stunning landscapes. As the Kelani River winds through dense rainforests, participants navigate swirling waters, challenging rapids, and cascading waterfalls. Led by experienced guides, the rafting journey offers both excitement and breathtaking scenery. Kitulgala's white-water rafting provides an adrenaline-packed experience, combining the rush of adventure with the beauty of nature, making it a must-try activity for those seeking an unforgettable journey through the heart of Sri Lanka.



Roping Down from waterfalls

Rappelling down the cascading waterfalls of Kitulgala, Sri Lanka, is an exhilarating adventure that seamlessly blends nature and adrenaline. With lush rainforests as a backdrop, participants are equipped with harnesses and helmets before descending the picturesque falls. Safety is paramount, with experienced guides providing thorough instructions. The activity, suitable for beginners, offers a unique connection to nature while delivering an unforgettable thrill. Kitulgala's stunning landscapes and the rush of Waterfall rappelling creates an immersive and memorable adventure for all.



Canyon at Kitulgala

Nestled in the heart of Kitulgala, the Canyon presents an awe-inspiring natural marvel. This geological wonder, etched by the Kelani River, unveils a breathtaking landscape of towering cliffs and lush greenery. Adventure enthusiasts are drawn to its challenging terrain, offering thrilling opportunities for canyoning and exploration. The Canyon at Kitulgala is not just a physical adventure but a journey into the soul of nature, where the rush of water and the rugged terrain create an unforgettable experience for those seeking both excitement and serenity.



Day 01 program

Kitulgala

Day 1 -Kithulgala

- Breakfast at the hotel.
- Having a great experience with the adventure of water rafting and water games.
- You can also take a short nature walk or visit the Kalani River.
- Spend the night surrounded by the cool, serene atmosphere of Kithulgala





Day 02 and 03

Kandy

Kandy, Sri Lanka's cultural capital, is one of the most beautiful cities in the world. This capital, founded by Vimaladharmasuriya I in 1592, was the seat of government during the Dutch and Portuguese occupations of the Maritime Provinces and until British rule in 1815. It's set on a plateau surrounded by mountains, which are home to tea plantations and biodiverse rainforests. As well as it is the heart of the Buddhists because of the temple of the Sacred Tooth Relic





Kandy Highlights

Sri Lanka Culture Show



Immerse yourself in the vibrant tapestry of Sri Lankan culture through the captivating Kandy dance, a cultural show in the heart of Kandy. This traditional performance showcases the island nation's rich heritage, featuring dynamic drumming, intricate costumes, and mesmerizing rituals. The Kandy dance, deeply rooted in history and folklore, brings to life the essence of Sri Lanka's diverse cultural traditions. Witnessing this cultural extravaganza is an enchanting way to experience the rhythmic heartbeat and artistic expressions of this beautiful island nation.



Temple of the Tooth Rel

The Temple of the Tooth Relic, nestled in Kandy, Sri Lanka, stands as a sacred testament to the nation's religious and cultural heritage. Enshrining a revered tooth relic believed to be a fragment of Lord Buddha's tooth, the temple attracts pilgrims and visitors alike. Adorned with intricate carvings and surrounded by serene surroundings, the temple hosts daily rituals, adding a spiritual ambience. A UNESCO World Heritage Site, it symbolizes the profound connection between faith, history, and the cultural fabric of Sri Lanka.



Gem Museum

The Gem Museum in Sri Lanka, a radiant showcase in the gem-rich city of Ratnapura, offers a captivating journey into the world of Ceylon gems. Discovering the museum unveils the island's diverse gemstone treasures, including sapphires, rubies, and more. With a focus on education, it illuminates the artistry and craftsmanship involved in transforming raw gems into stunning jewellery. The Gem Museum is a glittering testament to Ceylon's status as a global gem destination, a beacon for enthusiasts and connoisseurs alike.



Day 02 program

Kandy

Day 2 - Kithulgala to Kandy

- After breakfast at the hotel departure to Kandy
- Pinnawala Elephant Orphanage Visit in the morning
- Visit the spice garden and drive to Kandy
- Enjoy a peaceful evening and overnight stay in Kandy.



Day 03 program

Day 3 - Kandy

- Breakfast at the hotel,
- Morning visit to the temple of the tooth. Explore the temple of the tooth, one of Sri Lanka's most sacred sites, known for housing a relic of the Buddha.
- Visit the Gem Museum which is a glittering testament to Ceylon's status as a global gem destination.
- And a space to enjoy the evening with the Lankan's charming Kandian dance, a cultural show and a city visit in the heart of Kandy.
- Enjoy a peaceful night in the cultural city of Kandy.



Nuwaraeliya

Nuwara Eliya is a scenic town in the central highlands of Sri Lanka, often referred to as "Little England" due to its cool climate and colonial-era architecture. Situated at an elevation of around 1,868 meters (6,128 feet), it is surrounded by rolling hills, lush tea plantations, and waterfalls. Nuwara Eliya is renowned for its temperate weather, which makes it a popular retreat from the tropical heat of the lowlands. Key attractions include the Hakgala Botanical Garden, Victoria Park, and Lake Gregory, where visitors can enjoy boating and picnics. The town's British colonial heritage is evident in landmarks such as the Grand Hotel and the Nuwara Eliya Golf Club. With its charming blend of natural beauty and historic charm, Nuwara Eliya is a favoured destination for both relaxation and exploration.





Day 04 program

Nuwaraeliya

Day 4 - Kandy to Nuwaraeliya

- Start your day with breakfast at your hotel in Kandy.
- After breakfast, depart for Nuwara Eliya.
- Enjoy the wonderful beauty of waterfalls, Tea estates and Tea factories on the way to Nuwaraeliya.
- Exploring a charming hill station known for its cool climate and colonial-era architecture And to the Gregory lake in the evening.
- Check-in at your hotel and relax.
- Spend the night surrounded by the cool, serene atmosphere of Nuwara Eliya.



Day 05 program

Day 5 - Nuwara Eliya

- After having breakfast at the hotel take a visit to the Huggala botanical garden and Seetha Kovil which the Hindu devotees consider as their sacred.
- Hiking Pidurutalagala
- Stay the night at the hotel in Nuwara Eliya.

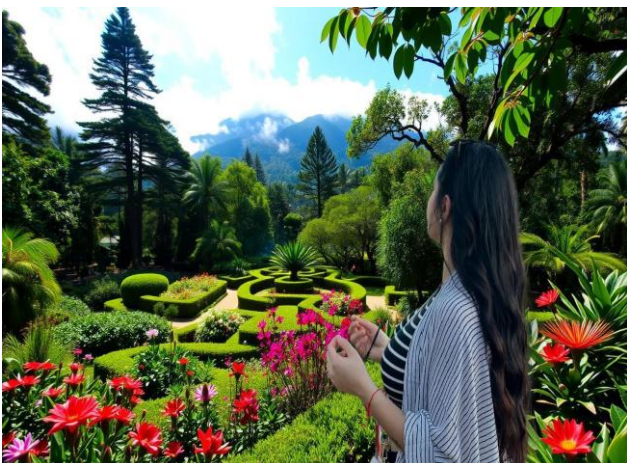


Nuwara Eliya Highlights



Gregory Lake

Gregory Lake is a serene and picturesque lake located in the heart of Nuwara Eliya, Sri Lanka. Created in 1873 during the British colonial period, it is a popular destination for relaxation and recreation. Surrounded by lush green hills and vibrant gardens, the lake offers activities such as boating, jet skiing, and paddle boating. Visitors can enjoy a leisurely stroll along the scenic paths or have a picnic by the water. The cool climate enhances the tranquil atmosphere, making Gregory Lake a perfect spot for families, couples, and nature enthusiasts seeking a peaceful escape amidst breathtaking landscapes.



Hakgala Botanical Garden

Hakgala Botanical Garden, located just 10 km from Nuwara Eliya, is a breathtaking sanctuary of flora and fauna. Nestled beneath the Hakgala Rock, the garden lies at an elevation of 5,400 feet, making it one of the highest botanical gardens in the world. Renowned for its collection of vibrant roses, orchids, and exotic plants, it bursts into colorful bloom during spring. Legend ties Hakgala to the Ramayana, believing it to be the site of Ravana's Ashoka Vatika. Visitors can stroll through themed sections, such as the Rose Garden and Fernery, enjoying the tranquil beauty and cool mountain breeze.



Day 06

Ella

Ella's allure extends beyond its stunning scenery, captivating travellers with a blend of adventure and cultural richness. The famous Nine Arch Bridge, an engineering marvel amidst emerald-green tea fields, beckons photographers and history enthusiasts. Hiking trails, such as the challenging trek to Ella Rock or the scenic Little Adam's Peak, provide exhilarating experiences. The town's vibrant market and cozy cafes add a cultural touch, making Ella an enchanting destination that seamlessly combines natural beauty with the warmth of local hospitality.





Ella Highlights



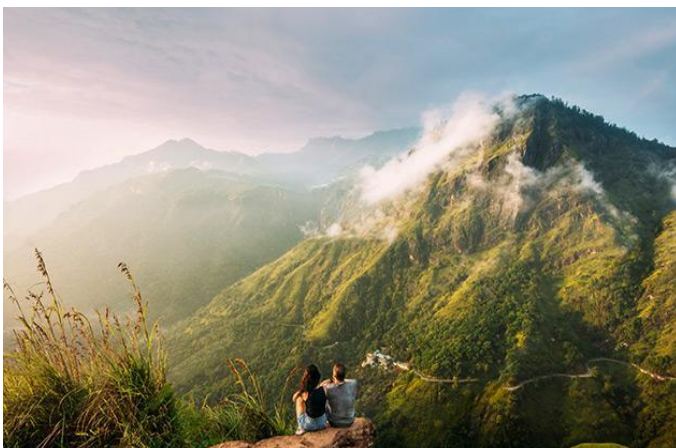
Nine Arches Bridge

This iconic bridge is a marvel of colonial engineering, built during British rule. The Nine Arches Bridge spans a deep valley and is surrounded by lush greenery, making it a popular photography spot. It is notable for its unique design, featuring nine arches that were constructed without the use of steel, a testament to the advanced engineering techniques of the time.



Ravana Falls

Ravana Falls is one of the most well-known waterfalls in Sri Lanka, steeped in both natural beauty and mythological significance. According to local legend, this is the waterfall where the demon king Ravana held Sita captive. The falls are easily accessible from the main road and provide a great opportunity to enjoy the surrounding nature.



Ella Rock

Ella Rock is one of the most famous attractions in the area. It offers breathtaking panoramic views of the surrounding mountains, valleys, and tea plantations. The hike to Ella Rock is a moderately challenging trek that takes you through dense forests, past small villages, and across streams. The top of Ella Rock is an ideal spot for sunrise or sunset, providing stunning views of the mist-covered hills.



Day 06 program

Ella

Day 6 - Nuwaraeliya to Ella

- Breakfast at the hotel.
- Drive to Nanuoya railway station and after the scenic train ride to Ella, passing through lush greenery, Tea plantations, waterfalls and beautiful hills.
- (This is the most beautiful railway in Sri Lanka)
- At the End of the day, you can experience a camping night in Ella



Yala

Yala National Park, located in southeastern Sri Lanka, is renowned for its diverse wildlife and stunning natural landscapes. It is the most visited and second-largest national park in the country, covering approximately 979 square kilometres. The park is famous for its high density of leopards, making it one of the best places in the world to spot these elusive big cats. In addition to leopards, Yala is home to elephants, crocodiles, deer, and a variety of bird species. The park features a mix of ecosystems, including dry forests, grasslands, and wetlands, offering a rich experience for nature enthusiasts and photographers.





Yala Highlights



Yala National Park is a wildlife haven, renowned for its incredible biodiversity and diverse ecosystems. Home to a rich array of animals, it boasts one of the highest leopard densities globally, making it a prime spot for big cat enthusiasts. Elephants roam the park's grasslands and forests, while sloth bears, spotted deer, and wild boars thrive in its habitats. Aquatic life flourishes in its lagoons, attracting crocodiles and waterbirds like herons and storks. Over 200 bird species, including peacocks and hornbills, make Yala a birdwatcher's paradise. This diverse wildlife, set against stunning backdrops, ensures every safari is a memorable adventure.



Yala National Park is home to a thriving population of majestic elephants, making it a key attraction for wildlife enthusiasts. These gentle giants roam freely across the park's diverse landscapes, including grasslands, forests, and watering holes. Herds, often led by matriarchs, can be spotted grazing or bathing, offering visitors a glimpse into their social behavior. Yala's elephants play a vital role in the ecosystem, dispersing seeds and maintaining the balance of vegetation. The park's conservation efforts ensure their protection, allowing visitors to witness these iconic creatures in their natural habitat during thrilling safaris. Yala is truly an elephant lover's paradise.



Day 07 program

Yala

Day 7 - Ella to Yala

- Begin your day with breakfast at your hotel in Ella.
- After breakfast, drive from Ella to Yala (approximately 3.5-4 hours), enjoying the scenic route through rolling hills and rural landscapes.
- A great experience of waterfall bathing.
- Check-in at your hotel in Yala.
- Enjoy a peaceful evening and overnight stay near the Yala National Park.



Day 08

Mirissa

Mirissa is a charming coastal town located on the southern coast of Sri Lanka, renowned for its beautiful beaches and vibrant marine life. It is a popular destination for whale watching, offering visitors the chance to see blue whales, dolphins, and other marine species. The town's crescent-shaped Mirissa Beach is ideal for swimming, sunbathing, and surfing, while the picturesque Parrot Rock provides stunning views of the coastline. Mirissa also features a variety of beachfront cafes and restaurants, creating a relaxed and lively atmosphere. With its blend of natural beauty and recreational activities, Mirissa is a favourite spot for travellers seeking a tropical paradise.





Mirissa Highlights



Snorkelling

Mirissa, Sri Lanka, invites snorkelling enthusiasts to explore its vibrant underwater world. The clear turquoise waters of Mirissa Bay provide an ideal setting to discover colourful coral reefs and diverse marine life. Guided snorkelling tours are available, catering to both beginners and experienced snorkelers. With the warm Indian Ocean embracing you, Mirissa offers a delightful opportunity to witness schools of tropical fish and immerse yourself in the beauty of the underwater ecosystem, making it a must-visit destination for marine enthusiasts.



Whale and Dolphin Watching

Embark on a maritime adventure off the coast of Sri Lanka with Whale and Dolphin Watching. Set sail from Mirissa, where the Indian Ocean reveals its diverse marine life. Experience the thrill of spotting majestic whales and playful dolphins in their natural habitat. Guided by expert naturalists, the expedition not only offers a chance to witness these magnificent creatures but also educates on marine conservation. This maritime odyssey promises both awe-inspiring encounters and a deeper understanding of the ocean's wonders.



Mirissa

Day 7 - Yala to Mirissa

- Breakfast at the hotel.
- Great wildlife experience at Yala National Park which covers approximately 979 square kilometres.
- After the Yala safari an evening drive to Mirissa where a charming coastal town located on the southern coast of Sri Lanka.
- Drive to Mirissa.
- check_in to the hotel and night stay.



Day 09

Hikkaduwa

Hikkaduwa, a coastal town in southwest Sri Lanka, is renowned for its stunning beaches, vibrant coral reefs, and lively atmosphere. The town offers a range of activities for visitors, including surfing, snorkelling, diving, and exploring the Hikkaduwa National Park, a marine sanctuary teeming with diverse marine life. With its laid-back vibe, delicious seafood, and friendly locals, Hikkaduwa is a popular destination for travellers seeking a relaxed beach getaway.





Day 09 program

Hikkaduwa

Day 10 - Mirissa to Hikkaduwa

- Breakfast at the hotel.
- Morning boat ride to watch Whales and Dolphins.
- Visit Coconut Tree Hill which is famous for one of the most beautiful landscapes in Mirissa.
- A great beach experience with swimming, surfing, sunbathing and also with the large variety of beachfront cafes and restaurants until the late evening.
- check -into the hotel in Hikkaduwa after around 50 kilometres ride from Mirissa.



Day 10 program

Hikkaduwa to the Airport

Day 11 - Hikkaduwa to the Airport

- Breakfast at the hotel.
- Last day experience with watching corrol.
- Boat ride at Madu River which has 64 small islands.
- Turtle Watching.
- Ride to the Airport to end up the wonderful travel experience in Sri Lanka,

详细行程安排

我们提供的车辆 - 面包车、巴士或轿车（含空调）



包括

- 机场特别寻呼和欢迎
- 全程乘坐舒适的空调车，配有英语司机导游 - 不包括海滩住宿
- 所有酒店的住宿加早餐都很基本
- 火车票 - 视供应情况而定
- 茶园和工厂参观（免费品茶）

不包括

- 不含观光门票（除非特别说明）
- 国际航班
- 签证费
- 行程中未提及的餐食和饮料
- 导游/司机小贴士

Detailed Itinerary

Address - Ceylon secret
22/B, Gurugoda, Horana
Sri Lanka.

Contact Number - +94711211298

E-mail - adithapathirage@acglanka.com



Aditha Pathirage

Guangzhou, Guangdong



Scan the QR code to add me as a friend.

